

inVia Raman microscopes

Upgradeable, automated Raman microscopes



The proven performance

Renishaw's Raman microscopes made even more flexible and easy to use



You choose

The functionality and level of automation that you need



Add modules

Match your changing requirements



Key benefits

Proven performance

The introduction of the RM Raman microscope by Renishaw in 1992 heralded a new age in Raman spectroscopy.

Renishaw's Raman microscopes have become the instruments of choice for users requiring the highest levels of flexibility, sensitivity, and reliability.

More than ten years later, Renishaw's RM Series Raman microscopes still offer more flexibility than any other Raman instrument on the market.

So why change them?

At Renishaw, apply innovation is not just a slogan, it's our practice. By applying innovation to every aspect of our engineering, we have introduced even more flexibility and more automation for greater ease-of-use; we present the inVia Raman microscopes.



Unparalleled flexibility and sensitivity

You choose the functionality and level of automation that you need and add to it as your requirements change.

Whichever configuration of inVia Raman microscope you choose, you will have the most flexible and sensitive Raman system on the market.

All configurations:

- can support multiple lasers, and provide full optical path optimization
- are compatible with the whole range of Renishaw's spectrometer, microscope, and sampling accessories

The top level inVia Raman microscope configuration, inVia Reflex, offers all the above with the added benefit of full automation; all other inVia Raman microscope configurations can be upgraded step-wise through to the inVia Reflex at any time.

Exceptional sensitivity comes as standard in all inVia Raman microscopes, offering ultra-low signal detection with minimum noise.

No other Raman microscope manufacturer offers the same levels of flexibility and sensitivity in one instrument.

Ease-of-use without compromise

Renishaw's inVia Raman microscopes add simplicity of operation to the high performance for which Renishaw Raman systems are renowned.

All inVia Raman microscopes are supplied with:

- Renishaw's powerful WiRE™ 2.0 software for intuitive operation and easy data manipulation
- Renishaw's high sensitivity ultra-low noise RenCam CCD detector
- Renishaw's high stability honeycomb baseplate with precision kinematic mounts for easy laser swapping

In addition, inVia Reflex configurations provide:

- automatic instrument re-configuration and validation when excitation wavelengths are switched
- automatic switching between white light sample viewing and Raman acquisition modes
- automatic switching to confocal operation
- automatic alignment optimization with built-in system performance validation

Unrivalled global network of support and service

Renishaw prides itself in its global network of subsidiaries and agents, providing a level of support and service second to none.

We offer complete customer focus at every stage.

Our teams of highly qualified engineers and scientists, and our fully equipped Raman demonstration laboratory, are available to

provide you with rapid and comprehensive product, technical, and application support. This includes:

- global after sales service
- sample analysis
- "hands-on" technical training
- method development
- seminars and lectures (on- and off-site)

Standard configurations

inVia Raman microscope configurations

inVia Raman microscopes are available in two standard configurations, inVia and inVia Reflex.

Intermediate configurations can be matched to satisfy customer's needs fully, without compromising the ability to upgrade later to a fully automated inVia Reflex Raman microscope.



The inVia Reflex Raman microscope has all the proven performance of Renishaw's renowned RM Series Raman microscope, with the addition of full automation



The inVia Raman microscope is ideal for those who want an entry-level system with the ability to upgrade to a fully automated inVia Reflex Raman microscope at a later date (Model illustrated includes optional eyepieces)

	inVia	inVia Reflex
Detector		
High sensitivity ultra-low noise CCD	✓	✓
Sample viewing		
Sample video viewer	✓	✓
Binocular eyepieces	⚙️	✓
Reflected light illumination	✓	✓
Illumination iris control	👤	💻
Illumination brightness control	👤	💻
Viewing/Raman changeover	👤	💻
Excitation rejection filters		
Filter change system	⚙️	💻
Diffraction system		
Holographic diffraction grating(s)	✓	✓
Motorized grating mount	✓	✓
Confocality control	👤	💻
Lasers		
Laser(s) on integral base plate	✓	✓
Laser conditioning aperture	⚙️	💻
Alignment optimization	👤	💻
Laser power control		
Attenuating filter steps	16	16
Attenuating filter control	💻	💻
Software		
WiRE™ instrument control software	✓	✓
Calibration		
Internal Raman calibration source	-	✓
Internal wavelength calibration source	-	✓
Instrument response calibration source	-	✓
Calibration	👤	💻
Validation	👤	💻
Legend		
Included	✓	
Not included	-	
Not included (available as option)	⚙️	
Manual control	👤	
Computer control	💻	

Features and options tailored to satisfy all your Raman needs

Features common to inVia and inVia Reflex Raman microscopes

Research grade microscope

Renishaw has selected Leica microscopes for incorporation within inVia Raman systems, ensuring inVia Raman microscopes have the high optical efficiency and high stability necessary for rapid, reliable operation.

Precision grating stage

inVia Raman microscopes' ultra-high precision diffraction grating stages and SynchroScan spectrum acquisition technology ensure your spectra are accurate and reproducible.

True imaging

inVia Raman microscopes' Raman and photo-luminescence imaging option allows you to determine the spatial distribution of materials rapidly.

Near-excitation Raman

inVia Raman microscopes' NExT filter option makes the study of near-excitation Raman bands easy. Now you can have the tuneability and near-excitation performance of a traditional triple grating system, without sacrificing the high optical efficiency you need for routine samples.

Honeycomb baseplate

inVia Raman microscopes' rigid lightweight baseplate with precision kinematic mounts results in a highly stable system that allows lasers to be exchanged with ease.

Flexible sampling

inVia Raman microscopes support many sampling accessories (fibre-optic probes, temperature control stages, etc.), maximizing the range of samples that can be examined.

UV excitation

inVia Raman microscopes' multiple optical path design enables UV lasers to be used easily and efficiently, without compromising the performance of any visible or near-infrared lasers.

Sensitivity

Renishaw's RenCam CCD detector, with its ultra-low noise, high sensitivity detector chip options, and low noise level electronics, is ideal for the most demanding Raman spectroscopy applications.

Fibre optic probes

Renishaw's fibre optic probes extend the range of measurement possibilities into applications where the sample cannot conveniently be brought to the instrument. inVia Raman microscopes' integral optics permit fibre optic probes to be used easily, and with high optical efficiency.



Features exclusive to inVia Reflex Raman microscopes

Alignment optimization and system validation

The inVia Reflex microscope automatically optimizes the optical alignment of each beam path, whether ultraviolet, visible, or near-infrared, and then validates system performance.

Automatic calibration

The inVia Reflex Raman microscopes' internal reference sources ensure that users know their Raman systems are calibrated and giving peak performance.

Excitation switching

One mouse click and the inVia Reflex Raman microscope can not only switch between lasers and automatically reconfigure itself, but also optimize its optical alignment to give maximum efficiency.

Confocality control

The inVia Reflex Raman microscope automatically switches between non-confocal and confocal (high spatial resolution) Raman modes, and then optimizes alignment.

Class 1 enclosure

The inVia Reflex Raman microscope's optional Class 1 laser safe microscope enclosure means inVia can be used in open laboratories.

View/Raman changeover

The inVia Reflex microscope's motorized optics make everyday operation easy by switching automatically between sample viewing and spectrum acquisition modes.

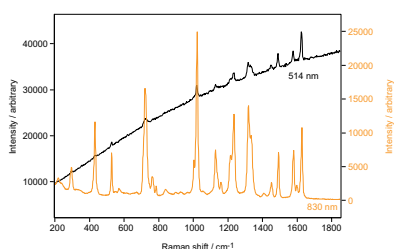


Solutions

EasyConfocal and mapping

inVia Raman microscopes give you high spatial resolution, and the capability to map your samples.

The inVia Raman microscope's EasyConfocal optical system offers high spatial resolution ($< 1 \mu\text{m}$ lateral) without compromising ease-of-use, stability, and optical efficiency. This capability can be used with the optional encoded sample stage to create maps of chemical composition and physical condition from lines, areas, and volumes of samples.

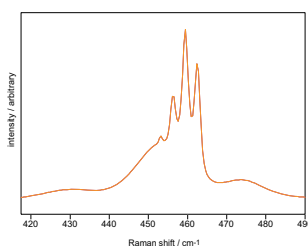


514 nm and 830 nm excitation spectra of poly (9-vinylcarbazole)

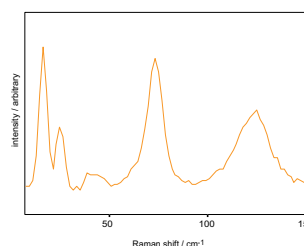
True imaging

Get the whole picture...fast! inVia Raman microscopes' True imaging option allows you to survey large areas of sample rapidly.

Renishaw's True imaging option illuminates a circular area on the sample and uses a tuneable filter to image light from a selected Raman or photoluminescence band directly onto the detector in a single step. The high speed of this method makes it ideally suited for the rapid surveying of larger areas in applications such as contaminant detection.



High resolution spectrum of CCl₄



Near-excitation spectrum of HgCl₂

Lasers

inVia Raman microscopes' flexible optical solutions support laser wavelengths from the near-infrared to the deep ultraviolet, without sacrificing efficiency.

inVia Raman microscopes' multiple laser baseplates and multiple optical paths allow users to switch rapidly between lasers, with the automatic changing of optical components ensuring optimum system performance is maintained at each wavelength.

inVia Raman microscopes are compatible with a wide range of laser sources.

Resolution and coverage

inVia Raman microscopes can be fitted with one or more diffraction gratings to satisfy all your requirements for spectral resolution, spectral coverage, and optimized sensitivity.

The wide choice of gratings, coupled with Renishaw's SynchroScan method for acquiring wide range artefact-free spectra, make inVia Raman microscopes ideally suited for both Raman and photoluminescence measurements.

Near-excitation Raman

Now you can have rapid spectrum acquisition and near-excitation Raman data from one instrument.

Renishaw's NEXt filter technology enables users to study features close to the laser line (as close as 10 cm^{-1} in some configurations). inVia Raman microscopes can be equipped with a NEXt filter for use alongside notch or edge filters, giving optimum optical efficiency for all measurement types.

Software

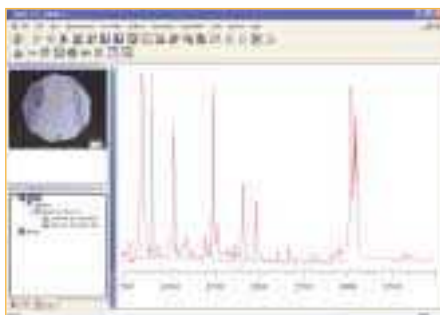
Accessories

Safety and further information

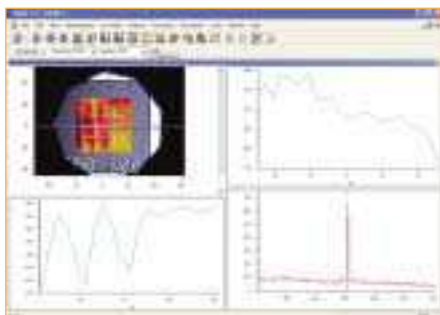
WiRE™ 2.0

Renishaw's powerful, easy-to-use WiRE™ 2.0 software is supplied with all inVia Raman microscopes, and provides:

- integrated control, data analysis, and database searching
- fully configurable interface
- operation on the latest Microsoft® Windows® XP platform for stability and security
- 21 CFR Part 11 compatibility
- flexible scripting language facility enabling customization
- data compatibility with industry standard software packages



Multiple scalable panes allow users to tailor the screen view to suit their needs



Raman mapping of an e-beam lithography test structure

Versatility

The versatility of the inVia Raman microscopes enable them to be used for a wide variety of spectroscopic studies. Accessories include:

- AFM/NSOM
- Fibre optic probes
- Macro sampling
- Temperature control cells
- Spectral databases
- Polarization viewing kits
- Polarization Raman kits
- Electrochemical cells
- High pressure cells
- Multiple detectors



Nanonics AFM/NSOM for ultra-high spatial resolution studies



Renishaw's RP10 compact probe being used to analyse gemstones *in situ*

Safety features

- Optional Class 1 laser safe enclosure
- Fully enclosed laser paths for multiple lasers
- Fully interlocked with interlock self-test features



Deep UV use requires Class 4 laser safety precautions

For more information on inVia Raman microscopes

Please contact your local Renishaw supplier for further information about any of the products you see here, or to discuss any special requirements you may have.

www.renishaw.com

Renishaw is continually improving its products and reserves the right to change specifications without notice.

Renishaw applies innovation to provide solutions to your problems

Renishaw is an established world leader in metrology, providing high performance, cost-effective solutions for measurement and increased productivity.

A worldwide network of subsidiary companies and distributors provides exceptional service and support for its customers.

Renishaw designs, develops and manufactures products which conform to ISO 9001 standards.

Renishaw provides innovative solutions using the following products:

- Probe systems for inspection on CMMs (co-ordinate measuring machines).
- Systems for job set-up, tool setting and inspection on machine tools.
- Scanning and digitising systems.
- Laser and automated ballbar systems for performance measurement and calibration of machines.
- Encoder systems for high accuracy position feedback.
- Spectroscopy systems for non-destructive material analysis in laboratory and process environments.
- Styli for inspection and tool setting probes.
- Customised solutions for your applications.

Renishaw worldwide

Australia

T +61 3 9521 0922
E australia@renishaw.com

Brazil

T +55 11 4195 2866
E brazil@renishaw.com

The People's Republic of China

T +86 10 8448 5306
E beijing@renishaw.com

Czech Republic

T +420 5 4821 6553
E czech@renishaw.com

France

T +33 1 64 61 84 84
E france@renishaw.com

Germany

T +49 7127 9810
E germany@renishaw.com

Hong Kong

T +852 2753 0638
E hongkong@renishaw.com

India

T +91 80 5320 144
E india@renishaw.com

Italy

T +39 011 966 10 52
E italy@renishaw.com

Japan

T +81 3 5332 6021
E japan@renishaw.com

The Netherlands

T +31 76 543 11 00
E benelux@renishaw.com

Poland

T +48 22 575 8000
E poland@renishaw.com

Russia

T +7 095 113 42 44
E russia@renishaw.com

Singapore

T +65 6897 5466
E singapore@renishaw.com

Slovenia

T +386 1 52 72 100
E mail@rls.si

South Korea

T +82 2 565 6878
E southkorea@renishaw.com

Spain

T +34 93 478 21 31
E spain@renishaw.com

Switzerland

T +41 55 415 50 60
E switzerland@renishaw.com

Taiwan

T +886 4 2251 3665
E taiwan@renishaw.com

UK (Head Office)

T +44 1453 524524
E uk@renishaw.com

USA

T +1 847 286 9953
E usa@renishaw.com

For all other countries

T +44 1453 524524
E international@renishaw.com