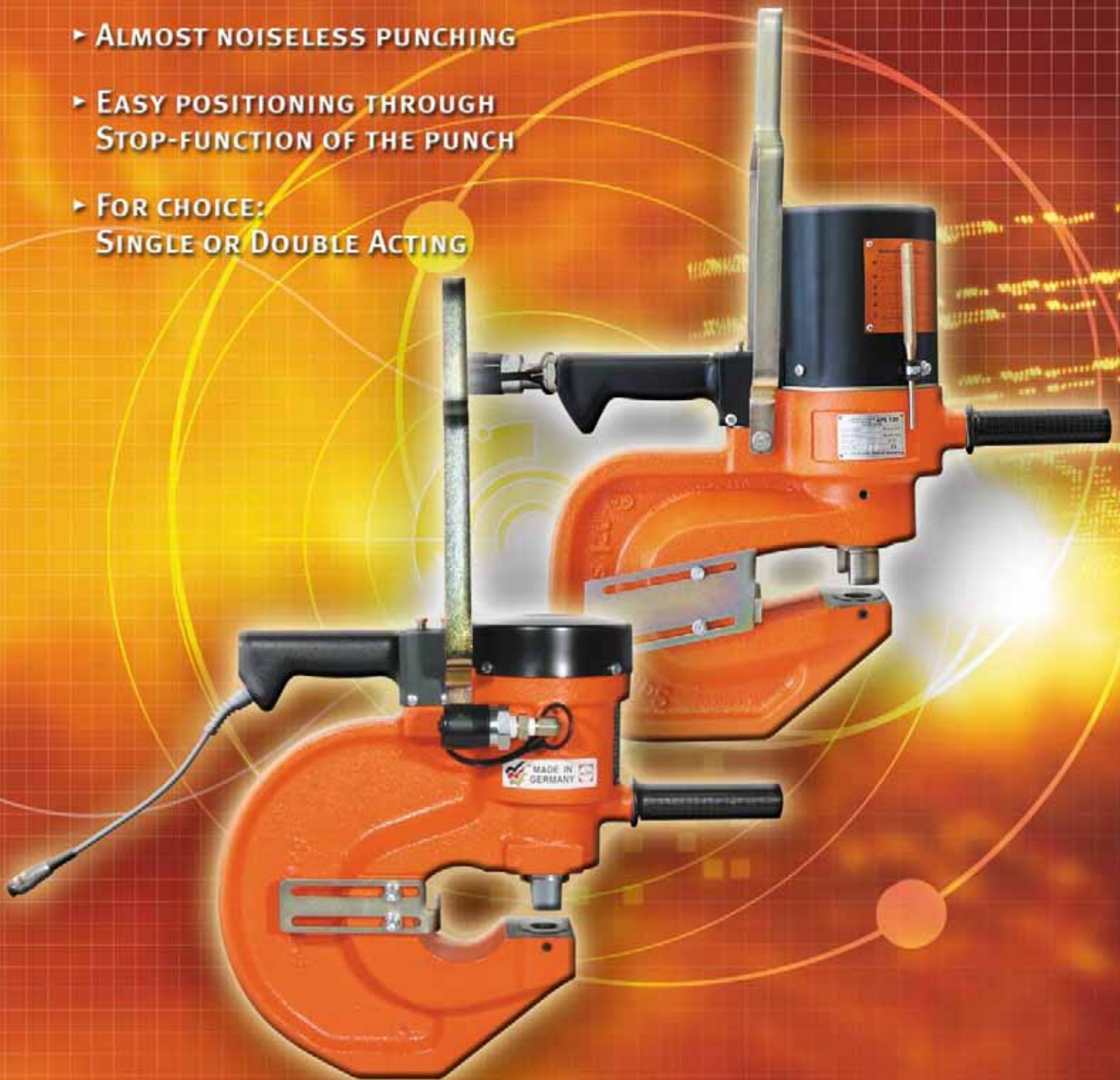


ALFRA - PRESS

HYDAULIC PUNCHING UNITS

- ▶ EASILY PORTABLE, FULLY AUTOMATIC HYDRAULIC PUNCHING UNITS FOR STEEL-, BRIDGE-, CONTAINER-, CRANE- AND METAL CONSTRUCTION
- ▶ MOBIL USE, NO TRANSPORT OF MATERIAL
- ▶ ALMOST NOISELESS PUNCHING
- ▶ EASY POSITIONING THROUGH STOP-FUNCTION OF THE PUNCH
- ▶ FOR CHOICE:
SINGLE OR DOUBLE ACTING





ALFRA-PRESS – Hydraulic Punching Units single acting

MADE IN GERMANY BY ALFRA

ALFRA-Press APS 60

Prod.-No.

Hydraulic Punching Unit with automatic return stroke via neoprene spring

23001

Technical Data:

Max. hole Ø mm	18 mm
Max. material thickness	10 mm when working on St. 42
Total punching time with Pump SC 05 II	appr. 7 sec.
with Pump SC 17	appr. 4 sec.
Throat depth	60 mm
Max. pressure	700 kg/cm ² (10000 psi)
Punching power	22 t
Punch stroke	16 mm
Weight	17 kg

Scope of supply:

APS 60 Punching Unit, control cable and hydraulic hose 5 m, spanner, punch and die Ø 14 mm



Prod.-No. 23001

ALFRA-Press APS 70

Prod.-No.

Hydraulic Punching Unit with automatic return stroke via neoprene spring

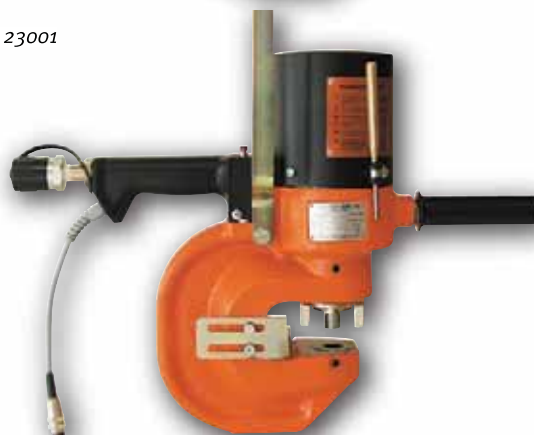
23002

Technical Data:

Max. hole Ø mm	22 mm
Oblong holes max.	22 x 14 mm
Max. material thickness	13 mm when working on St. 42
Total punching time with Pump SC 05 II	10 sec.
with Pump SC 17	5 sec.
Throat depth	70 mm
Max. pressure	700 kg/cm ² (10000 psi)
Punching power	30 t
Punch stroke	18 mm
Weight	21 kg

Scope of supply:

APS 70 Punching Unit, control cable and hydraulic hose 5 m, spanner, punch and die Ø 18 mm, depth fence, suspension hook



Prod.-No. 23002

ALFRA-Press APS 120

Prod.-No.

Hydraulic Punching Unit with automatic return stroke via neoprene spring

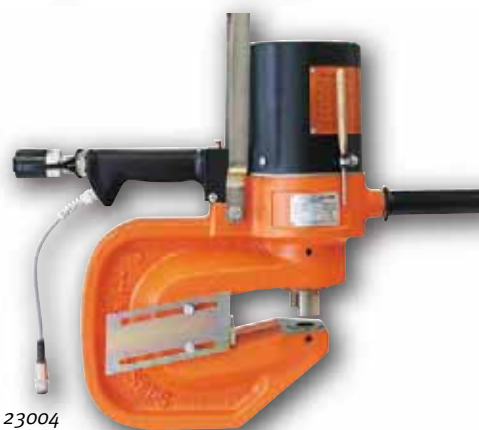
23004

Technical Data:

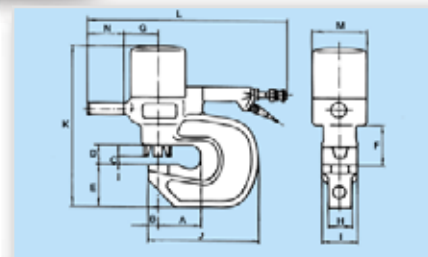
Max. hole Ø mm	25 mm
Oblong holes max.	25 x 18 mm
Max. material thickness	16 mm when working on St. 42
Total punching time with Pump SC 05 II	15 sec.
with Pump SC 17	8 sec.
Throat depth	110 mm
Max. pressure	700 kg/cm ² (10000 psi)
Punching power	44 t
Punch stroke	25 mm
Weight	35 kg

Scope of supply:

APS 120 Punching Unit, control cable and hydraulic hose 5 m, spanner, punch and die Ø 22 mm, depth fence, suspension hook



Prod.-No. 23004



Type	A	B	C	D	E	F	G	H	I	J	K	L	M	N
APS 60	60	17	12	51	73	92	75	40	74	162	360	552	110	135
APS 70	70	24	15	51	85	100	80	40	80	204	382	562	125	135
APS 120	110	25	18	51	111	110	90	68	100	285	442	585	144	135

Important technical notice:

The APS Punching Units are not suitable for punching high-tensile tool steels, stainless steels or boiler plates.

Ask for our technical advice for punching jobs in this application range.



ALFRA-PRESS – Hydraulic Punching Units double acting

MADE IN GERMANY BY ALFRA

ALFRA-Press APS 70D

Prod.-No.

Hydraulic Punching Unit with automatic return stroke

23180

Technical data:

Max. hole Ø mm	22 mm
Max. oblong holes	22 x 14 mm
Max. material thickness	13 mm when working on St. 42
Total punching time with pump SC 17-D	5 sec.
Throat depth	70 mm
Max. pressure	700 kg/cm ² (10000 psi)
Punching power	30 t
Punch stroke	18 mm
Weight	21 kg

Scope of supply:

APS 70 D Punching Unit, control cable and hydraulic hose 5 m, spanner, punch and die Ø 18 mm, depth fence, suspension hook



Prod.-No. 23180

ALFRA-Press APS 110D

Prod.-No.

Hydraulic Punching Unit with automatic return stroke

23181

Technical data:

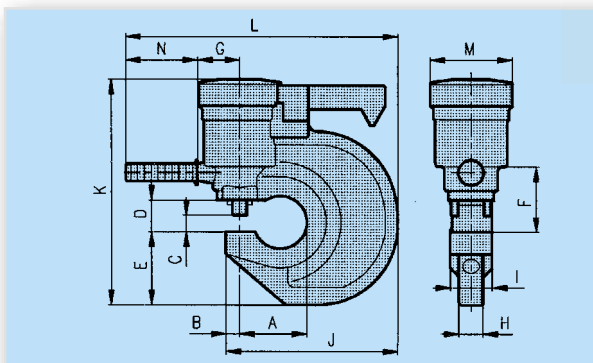
Max. hole Ø mm	25 mm
Max. oblong holes	25 x 18 mm
Max. material thickness	16 mm when working on St. 42
Total punching time with pump SC 17-D	8 sec.
Throat depth	110 mm
Max. pressure	700 kg/cm ² (10000 psi)
Punching power	44 t
Punch stroke	25 mm
Weight	35 kg

Scope of supply:

APS 110 D Punching Unit, control cable and hydraulic hose 5 m, spanner, punch and die Ø 22 mm, depth fence, suspension hook



Prod.-No. 23181



Type	A	B	C	D	E	F	G	H	I	J	K	L	M	N
APS 70D	70	24	28	55	126	112	73	41	71	295	387	468	141	124
APS 110D	110	24	28	55	90	112	73	41	78	210	351	383	121	124



Important technical notice:

The APS Punching Units are not suitable for punching high-tensile tool steels, stainless steels or boiler plates.

Ask for our technical advice for punching jobs in this application range.

ALFRA-Press APS 110D converted into numbering apparatus for markings in steel construction upon request.



ALFRA – Hydraulic Pumps

MADE IN GERMANY BY ALFRA

For the use of our Punching Units, there are two Hydraulic Pumps available

ALFRA Hydraulic-Pump SC 05 II for APS 60, 70, 120

ALFRA Hydraulic-Pump SC 05 II	Prod.-No. 23005
-------------------------------	---------------------------

Technical Data:

Working pressure max.	750 kg/cm ² (10670 psi)
Pump capacity	
0-100 kg/cm ²	50 HZ 1,18 l/min.
100-700 kg/cm ²	50 HZ 0,54 l/min.
Oil quantity	5,0 l
Single phase motor 1500 rpm	550 W 110v and 230v 50 HZ
Weight incl. oil and roll bar	29 kg



Prod.-No. 23005

ALFRA Hydraulic-Pump SC 17 for APS 60, 70, 120

ALFRA Hydraulic-Pump SC 17 complete with control and switch box	Prod.-No. 23170
--	---------------------------

This new pump was especially developed to drastically reduce the punching time. Specially suitable for the use in the workshop.

Technical Data:

Working pressure max.	750 kg/cm ² (10670 psi)
Pump capacity	50 HZ 1,63 l/min.
Oil quantity	17 l
Single phase motor 1450 rpm	1500 W 110v and 230v 50 HZ
Weight incl. oil and transport rollers	45 kg
Dimensions (L x W x H)	550 x 370 x 560 mm



SC 17

Prod.-No. 23170

ALFRA Hydraulic-Pump SC 17D for APS 70D, 110D

ALFRA Hydraulic-Pump SC 17D double acting complete with control and switch box.	Prod.-No. 23186
--	---------------------------

With connector for double hose package.

This new pump was especially developed to drastically reduce the punching time. Specially suitable for the use in the workshop.

Technical Data:

Working pressure max.	750 kg/cm ² (10670 psi)
Pump capacity	50 HZ 1,63 l/min.
Oil quantity	17 l
Single phase motor 1450 rpm	1500 W 110v and 230v 50 HZ
Weight incl. oil and transport rollers	47 kg
Dimensions (L x W x H)	550 x 370 x 560 mm



Connector for double hose package.



SC 17 D

Prod.-No. 23186

For ALFRA Press Hydraulic Punching Units

Prod.-No.

With **blocking device**, spring fracture safety device, length of cable 2.0 m

9362 B	15 - 20 kg	23150
9363 B	20 - 25 kg	23151
9366 B	35 - 45 kg	23152

Attention:

Actuation of spring hoist only with suspended Punching Unit resp. under load.



Prod.-No. 23152

ALFRA – Service-Boy

Made in Germany by ALFRA

For Hydraulic Punching Units APS 60 – 70 – 120 – TÜV-certificate –

This handy time- and energy saving cart makes the handling of our Hydraulic Punching Units more comfortable. Absolutely necessary for every structural steel worker- even where our Hydraulic Punching Units are already used.

- Easy positioning of the Punching Head at the steel girder due to gas pressure shock absorber.
- Being located on the Service Boy the hydraulic pump does not need to be carried any longer.
- Tool cabinet with drawers for clean arrangement of the punching tools and accessories.
- Solid and safe construction with TÜV-certificate (tested by the German Technical Supervision Authority)- less expensive than any „self-made“ construction.
- Dimensions (L x W x H): 900 x 530 x 2000 mm

Prod.-No.

Complete with tool cabinet and drawers	23160
--	-------



Prod.-No. 23160 (Tools and Punching Unit/Pump not included)



Punches for

APS 120 APS 110D	APS 70 APS 70D	APS 60	Ø mm	Prod.-No.
■	■	■	7	23-01-07
■	■	■	8	23-01-08
■	■	■	9	23-01-09
■	■	■	10	23-01-10
■	■	■	11	23-01-11
■	■	■	12	23-01-12
■	■	■	13	23-01-13
■	■	■	14	23-01-14
■	■	■	15	23-01-15
■	■	■	16	23-01-16
■	■	■	17	23-01-17
■	■	■	18	23-01-18
■	■	-	19	23-01-19
■	■	-	20	23-01-20
■	■	-	21	23-01-21
■	■	-	22	23-01-22
■	-	-	23	23-01-23
■	-	-	24	23-01-24
■	-	-	25*	23-01-25

*) with tension nut Prod.- No. 2350012003 B

Dies for

APS 120 APS 110D	APS 70 APS 70D	APS 60	Ø mm	Prod.-No.
■	■	-	7	23-02-07
■	■	-	8	23-02-08
■	■	-	9	23-02-09
■	■	-	10	23-02-10
■	■	-	11	23-02-11
■	■	-	12	23-02-12
■	■	-	13	23-02-13
■	■	-	14	23-02-14
■	■	-	15	23-02-15
■	■	-	16	23-02-16
■	■	-	17	23-02-17
■	■	-	18	23-02-18
■	■	-	19	23-02-19
■	■	-	20	23-02-20
■	■	-	21	23-02-21
■	■	-	22	23-02-22
■	-	-	23	23-02-23
■	-	-	24	23-02-24
■	-	-	25	23-02-25
-	-	■	7	23-03-07
-	-	■	8	23-03-08
-	-	■	9	23-03-09
-	-	■	10	23-03-10
-	-	■	11	23-03-11
-	-	■	12	23-03-12
-	-	■	13	23-03-13
-	-	■	14	23-03-14
-	-	■	15	23-03-15
-	-	■	16	23-03-16
-	-	■	17	23-03-17
-	-	■	18	23-03-18

Important:

On Material St. 37: max. material thickness = 0.8 x hole-Ø
 On Material St. 42: max. material thickness = 0.5 x hole-Ø



Prod.-No. 23-01-..



Prod.-No. 23-02-..



Tip:

Punches and Dies are interchangeable with Nitto/Selfer Punching Systems.

Tip:

Please oil Punch from time to time, when material is heavily oxidized.



5°-bevelled Dies for

APS 120	APS 70	Ø mm	Prod.-No.
APS 110D	APS 70D		
■	■	10	23-04-10
■	■	11	23-04-11
■	■	12	23-04-12
■	■	13	23-04-13
■	■	14	23-04-14
■	■	15	23-04-15
■	■	16	23-04-16
■	■	17	23-04-17
■	■	18	23-04-18
■	■	19	23-04-19
■	■	20	23-04-20
■	■	21	23-04-21
■	■	22	23-04-22
■	-	23	23-04-23
■	-	24	23-04-24
■	-	25	23-04-25



Prod.-No. 23-04-.. (for girders with bevelled flanges)

Oblong tools for

mm	APS 120	APS 70	Punch Prod.-No.	Die Prod.-No.
	APS 110D	APS 70D		
16 x 8	■	■	23-01-1608	23-02-1608
18 x 9	■	■	23-01-1809	23-02-1809
18 x 11	■	■	23-01-1811	23-02-1811
20 x 10	■	■	23-01-2010	23-02-2010
20 x 12	■	■	23-01-2012	23-02-2012
20 x 14	■	■	23-01-2014	23-02-2014
22 x 11	■	■	23-01-2211	23-02-2211
22 x 14	■	■	23-01-2214	23-02-2214
24 x 12	■	-	23-01-2412	23-02-2412
25 x 9*	■	-	23-01-2509	23-02-2509
25 x 12*	■	-	23-01-2512	23-02-2512
25 x 13*	■	-	23-01-2513	23-02-2513
25 x 14*	■	-	23-01-2514	23-02-2514
25 x 18*	■	-	23-01-2518	23-02-2518

Prod.-No. 23-02-..



Prod.-No. 23-01-..

*) with tension nut Prod.-No. 2350012003B
Other dimensions on request

Spare Parts:

	Prod.-No.
Spare high pressure connection hose, 5 m cpl. with control cable and coupling	2350012162
Spare high pressure connection hose, 10 m cpl. with control cable and coupling	2350012162A
Spare high pressure connection hose, 15 m cpl. with control cable and coupling	2350012162B
Spare high pressure connection hose For APS 70D + 110D (double hose package) cpl. with control cable and double coupling	2350021369

Prod.-No. 2350012162



Prod.-No. 2350012162



Note:

Pressure build-up prolongs to appr. additional 4 sec. (10 m hose),
appr. 6 sec. (15 m hose).

Tension nut for punches Ø 7 - 24 mm	2350012003A
Tension nut for punches Ø 25 mm (only APS 120)	2350012003B



Prod.-No. 2350012003A
For Punch Ø 7 - 24 mm



Prod.-No. 2350012003B
For Punch Ø 25 mm