

More Than Just a Standard Programme



■ Silence

Thanks to Sophisticated Sound Insulation



2



3



1) One more layer to make 16 dB(A) come true: The dual technology of FRIAPHON pipes

2) The FRIAPHON double sleeve as standard connection capable of compensating pipe elongation and longitudinal sound decoupling (sleeve-integrated features)

3) The FRIAPHON support clamp prevents the occurrence of structure-borne sound bridges

The comfort of home

You can always rely on the silence created by FRIAPHON wastewater pipes installed metre by metre. In all residential or office buildings, hospitals or hotels. In detached family houses, too, sound-reducing measures prove useful. It's there FRIAPHON increases the amenities of home.

Silence by experience

Looking back on more than 15 years of practical on-site experience: the sound-insulating system components of the FRIAPHON in-house wastewater programme tried and tested in millions of installations. Reaching a level of just 16 dB(A), the FRIAPHON programme easily exceeds the requirements laid down in standard DIN 4109 (Sound Insulation in Buildings). The dual technology of the high-quality plastic pipe and the perfect connection and push-fit technology account for this excellent tested value.

An easy-to-use full-range programme

- DN 50 – DN 150 product range offering a full-scale fitting programme (bends, branches, double sleeves)
- Heat-resistant up to 90°C and durable. Meeting standards DIN 1986-100 and DIN-EN 12056
- Particularly cost-efficient processing – the push-fit, bonding, and tightening components of the system and its light weight make installation considerably easier
- Fire-stop collar with tested sound insulation properties
- Application as rainwater drainage pipe up to 3 bar possible thanks to its non-positive bonding connection technology
- High-level resistance to chemical substances

■ Safety

Thanks to Perfect Fire Protection



1) FRIAPHON fire test: a view into the fire chamber

2) No fire spreading to lower levels

3) Activated fire-stop collar after fire testing

1

2

3

4) Always a good fit: The FRIAPHON fire-stop collar for wall ducts



5) Double solution: The fire-stop collar combines sound insulation and fire-protection features

6) The FRIAPHON material: self-extinguishing and not dropping off in case of fire

4

5

6

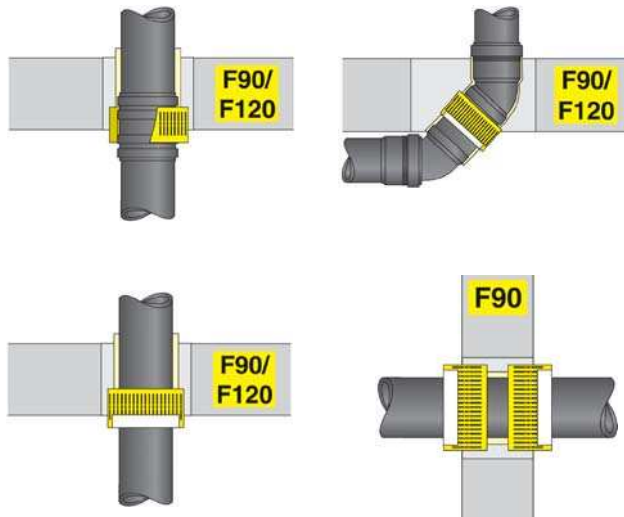
Sophisticated fire protection

FRIAPHON meets all requirements set forth in Model Building Ordinance and Federal State Building Ordinances as regards preventive fire protection. FRIAPHON pipes and fittings are classified as self-extinguishing components not dropping off as per standard DIN 4102, B2. These unique material properties prevent fire from spreading to lower levels. To be on the safe side, we even conducted a test to prove this. The result: In combination with FRIAPHON fire-stop collars, the system's fire protection properties exceed legal provisions. You can't get more safety.

The FRIAPHON® fire-protection and safety package

- FRIAPHON does not drop off in case of fire and stops burning when not directly exposed to fire
- FRIAPHON prevents fire from spreading
- FRIAPHON fire-stop elements (pipes, fittings and collars) are tested and approved

Just in case – preventive fire protection



Pipes guided through ceilings or walls must be absolutely fire- and flue gas-proof for a minimum period of 90 minutes in case of fire. The extremely flat FRIAPHON fire-stop collars – even approved for direct installation on sockets – meet this requirement.

■ Special Fittings – Made by FRIATEC



1



2

1) FRIAPHON Special Fittings

2) The push-fit, bonding, and tightening connection technology of the FRIAPHON product range helps you stay flexible

Sophisticated refurbishing

Bathroom modernisation – often, this is another term for integrating the new in-house wastewater system in an awkward and time-consuming fashion under rather confined conditions. The FRIAPHON special fittings make everything much easier and faster – and they even help save space: The range of FRIAPHON special fittings provides for additional useful space in bathrooms or small toilets. The programme's clamping connector not only helps easily connect FRIAPHON pipes in especially confined areas. It can also be applied to establish connections to cast-iron pipe systems.

FRIAPHON® special fittings make day-to-day work easier

- Simple and space-saving installation is characteristic of the FRIAPHON product range
- Reduction of installation time
- Professional implementation of customer requirements
- Creation of additional useful space in bathrooms

Fax back to: +49 621 486-1599

We are interested in further information about the in-house wastewater system FRIAPHON. Please send us on a non-binding basis and free of charge:

- ☐ Your planning and installation instructions
- ☐ Your brochure "Special Fittings"
- ☐ Please contact us to arrange a meeting with your sales representative

Company

Name

First Name

Street

ZIP code, place, Country

E-Mail

Phone

Fax

FRIATEC Aktiengesellschaft Building Services Division

Steinzeugstraße 50 · 68229 Mannheim · Germany
Phone +49 621 486-1914 · Fax +49 621 486-1599
www.friatec.de · info-gebaeudetechnik@friatec.de

